





Teal Alert



Problem and Solution

- Falls followed by unconsciousness is a leading cause of elderly injuries and death in America
- Getting timely help could mean the difference between life and death, retention of mobility and or other basic life functions
- Teal Alert seeks to provide timely assistance through the utilization of sensor technology



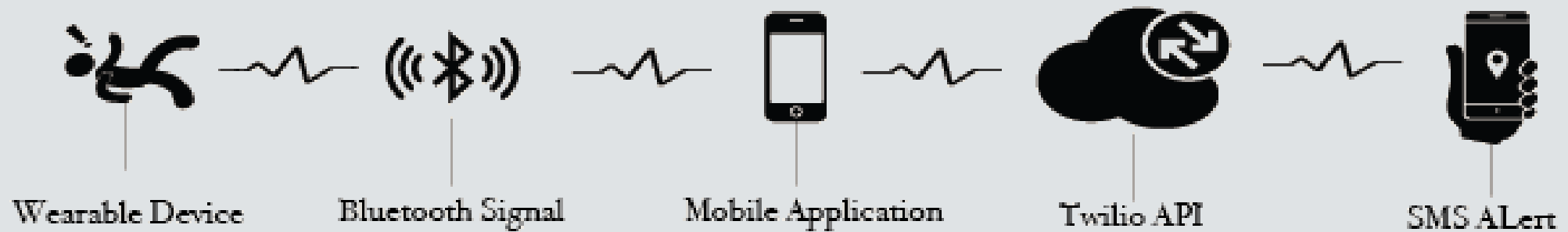
Existing Solutions

- Athena – need to press a button
- Fall apps – for the purpose of construction workers. Works only with phone, does not utilize sensor technology
- Smartervision – works by installing cameras in every room of the home

*THE NEXT GENERATION
FOR WOMEN'S SAFETY*



Systems Design Flow Chart



Methodology

First round of data gathering:

- 39 different kinds of falls

Second round of data gathering:

- 2 different kind of falls (forward and backward)

Overall:

- 150 falls over 20 different subjects
- Age 22-40 years
- Across gender

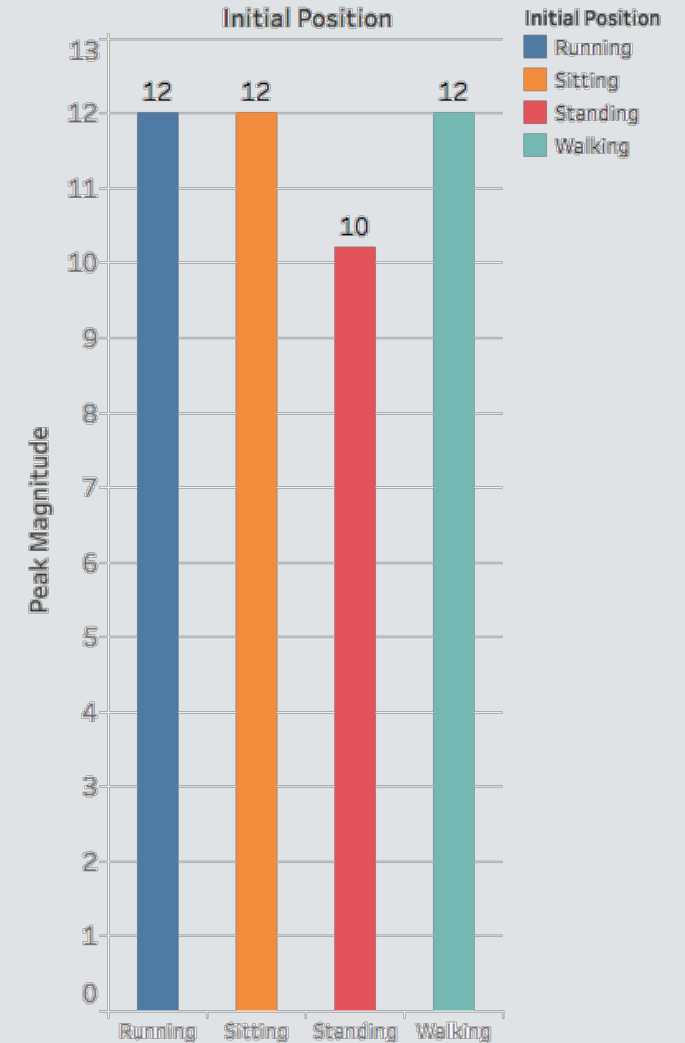


Data analysis

Peak Values - All Initial Positions

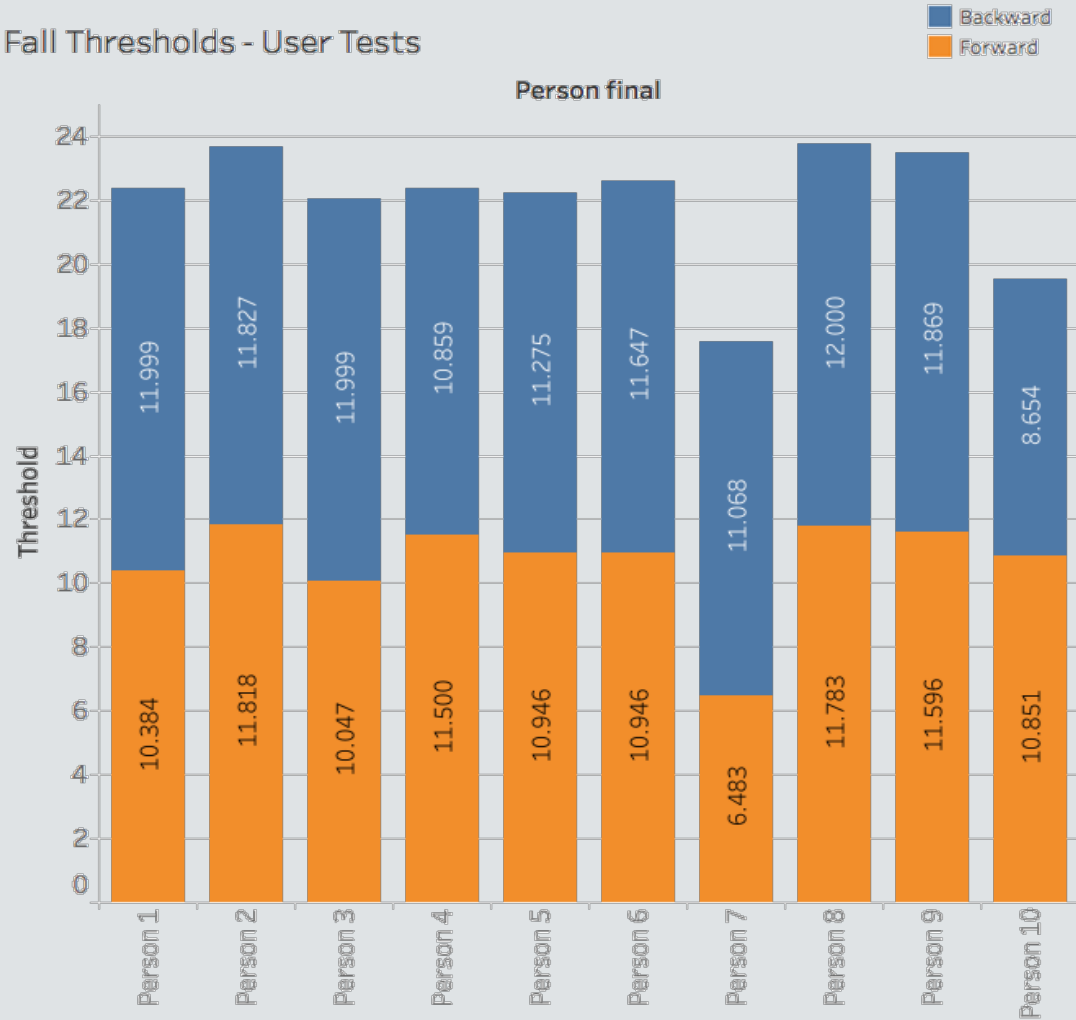


Peak Values - All Initial Positions

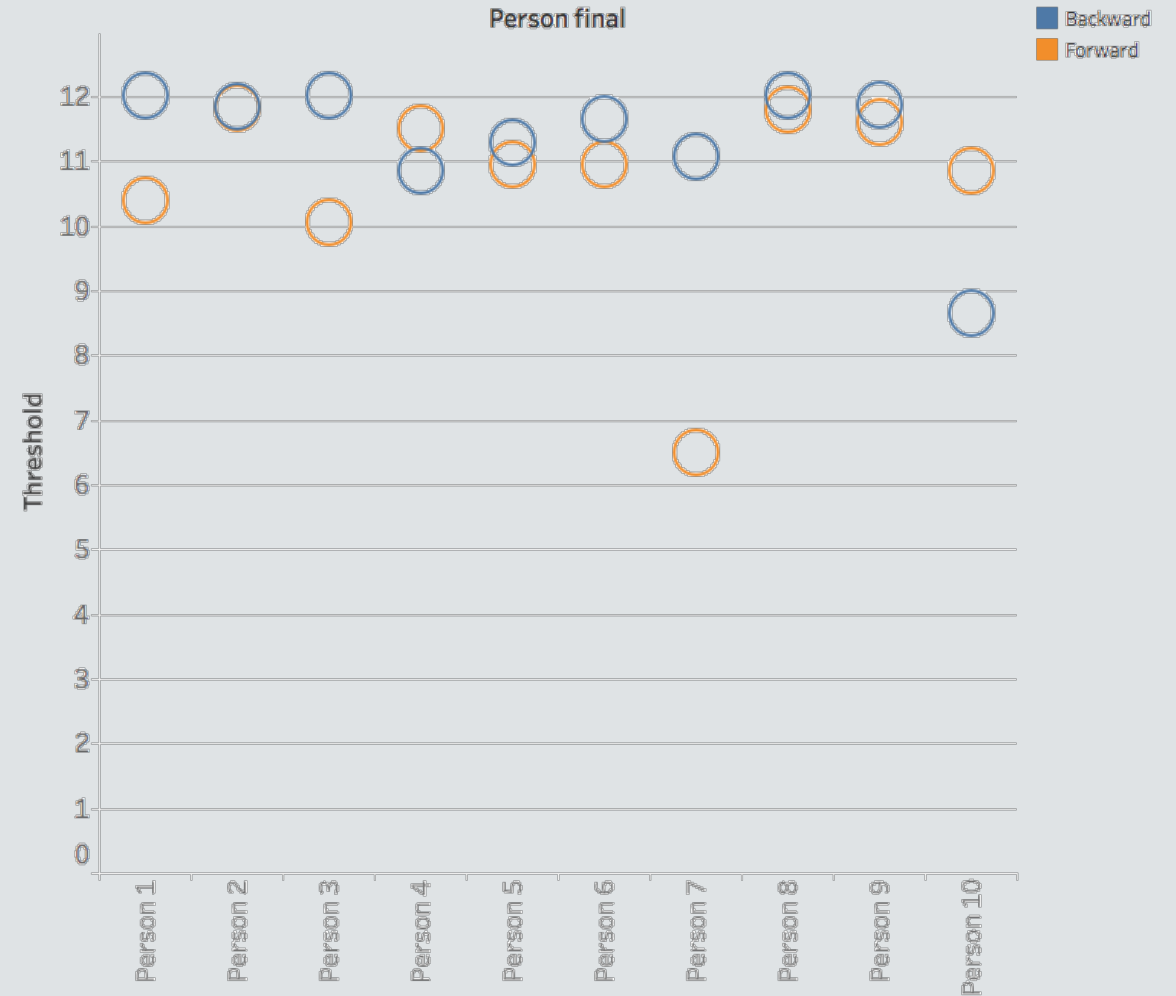


Data analysis

Fall Thresholds - User Tests



Fall Thresholds - User Tests

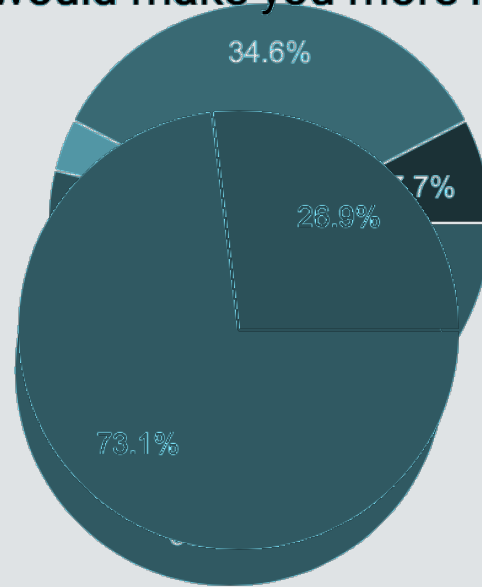


Survey Results/Product Design

- According to our survey research, the most appropriate application of our device appears to be for the elderly population
- Our greatest concern had to do with false positive or false negatives

Have you ever been in a situation where you might have appreciated an app like Teal Alert?
 (26 responses)

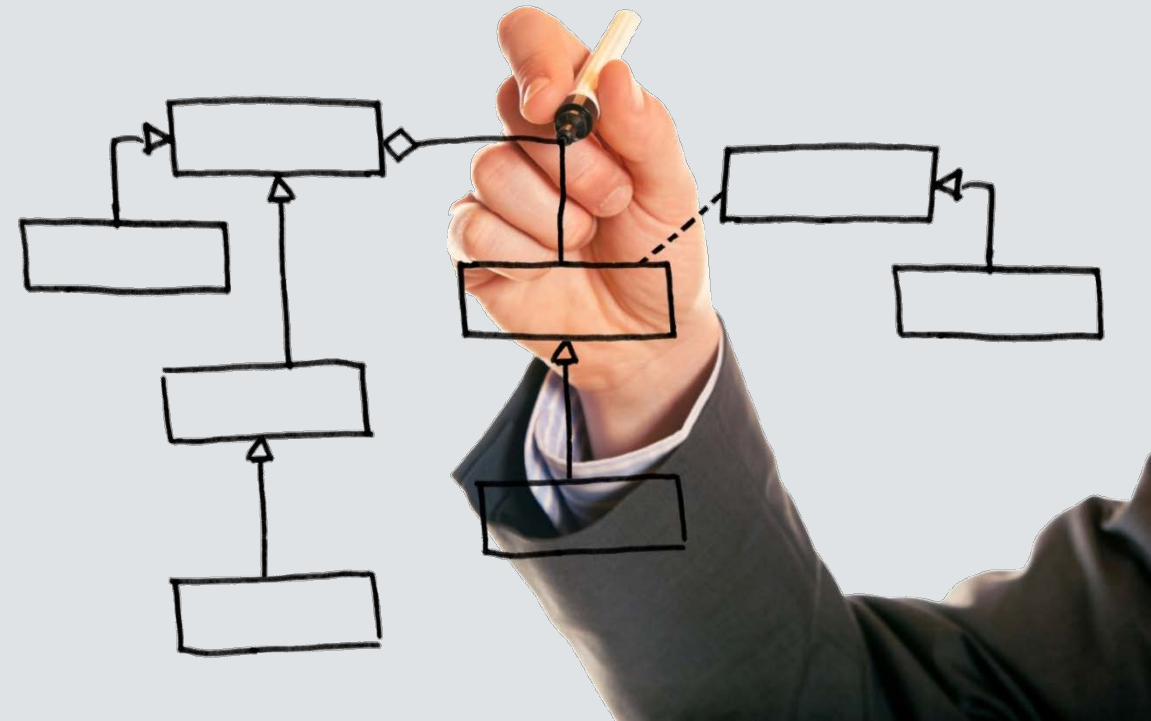
Do you think Teal Alert is the most effective?
 (26 responses)



- Use at parties where there are unfamiliar faces to prevent sexual assault (eg Brock Turner case, Bill...)
- No
- Use at all time for the elderly
- Yes many false alarms for me to turn off
- Use on hikes or jogging or some activity where I may pass out or be...
- If Teal Alert fails to send an alert when it is appropriate
- Diabetic patients, seizure patients or patients with medical conditions tha...
- Use on hikes or jogging or some activity where I may pass out of be...

Future Enhancements

- Turn on camera and mic as alert is being sent out
- Continue improving our algorithm
 - Broader population & other sensors
- Multiple emergency contacts
 - Integration with nearby taxi drivers or hospitals
- Expand to other applications & tailored features
 - Women's safety
 - Hikers





THANK YOU!!!