



Cultivating children's connection with nature through an outdoor play system



What is Playscape?

Playscape is an **outdoor play system solution** that encourages children to explore local biodiversity through an interactive installation and a digital companion. With tactile exploration, dynamic insights into animal lifecycles and captivating treasure hunts, Playscape empowers children to explore, learn, and connect with nature in a playful and engaging manner.

35%

Less time engaging in **outdoor play** compared to parents

<50%

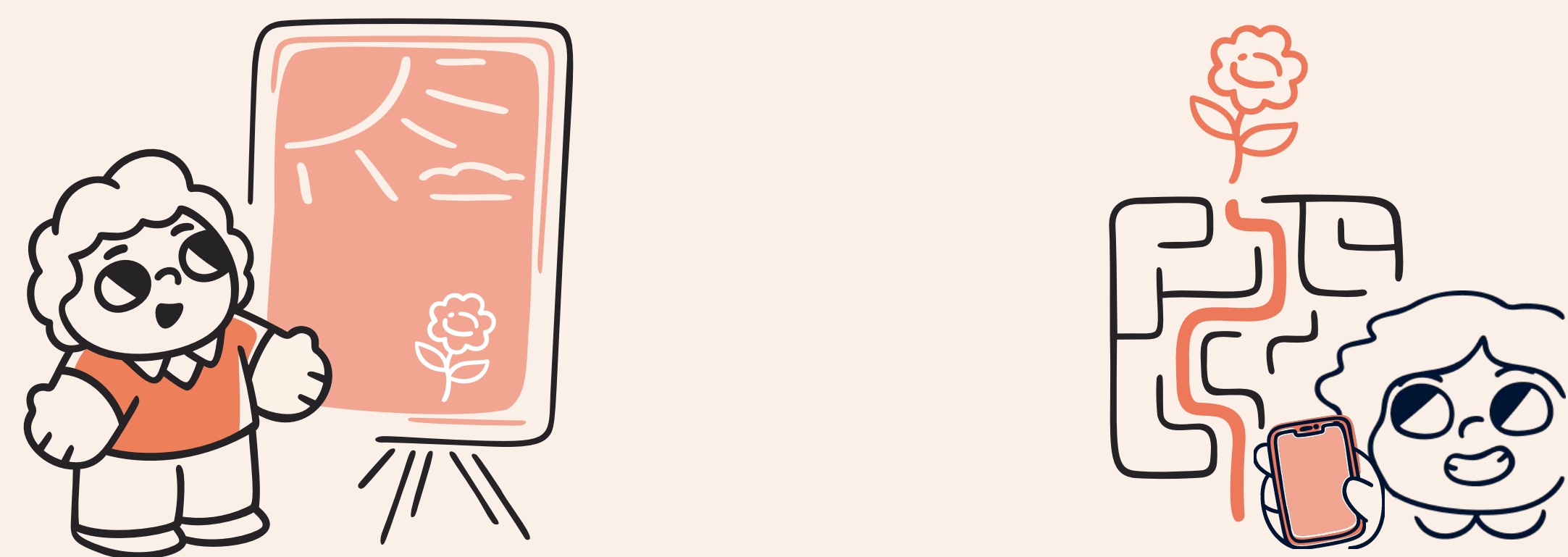
Accuracy for children over 8 when **identifying species** over Pokemon

41%

Ecosystems are at risk of **range-wide collapse**

Playscape System Flow

1. Interact with frame
2. Explore outdoors with the app



The physical installation



Hear the sounds of the species



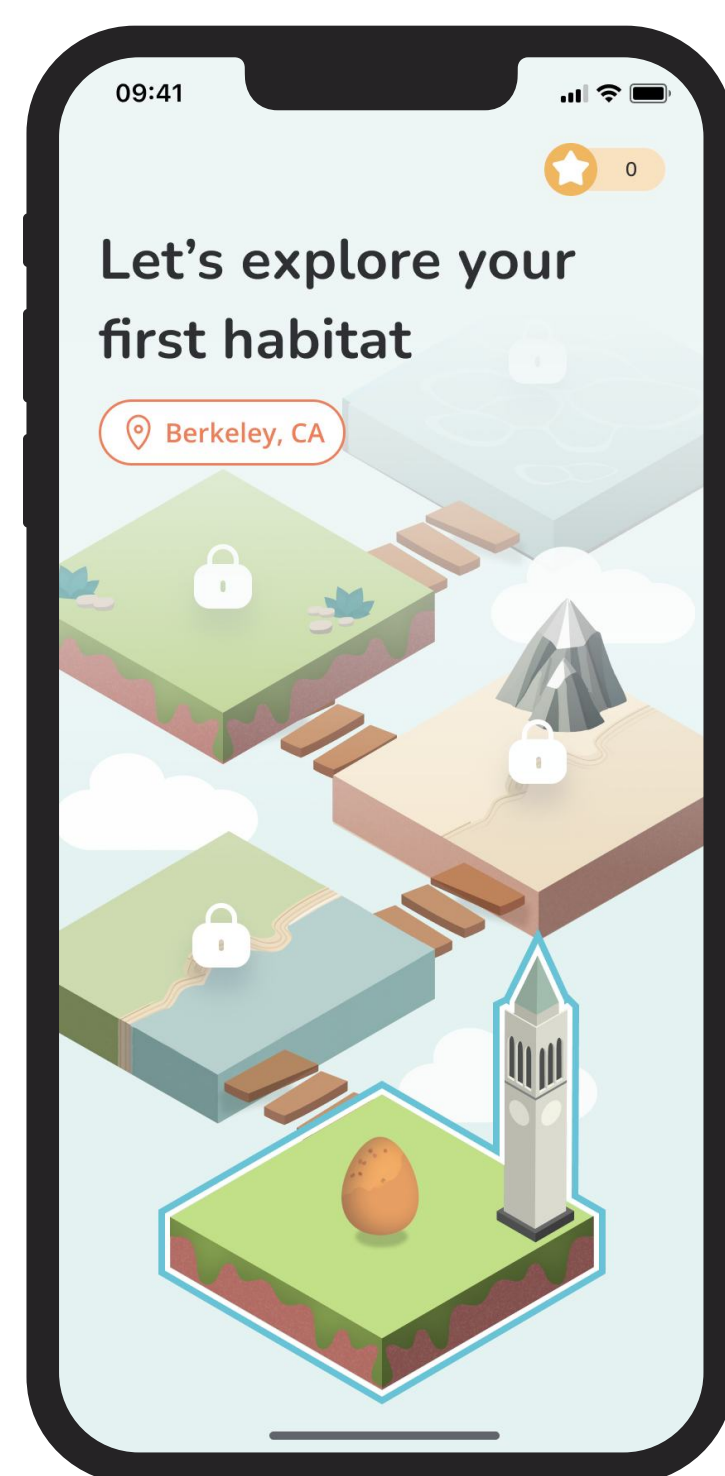
See and **identify** a snapshot of local biodiversity



Draw on the clear frame

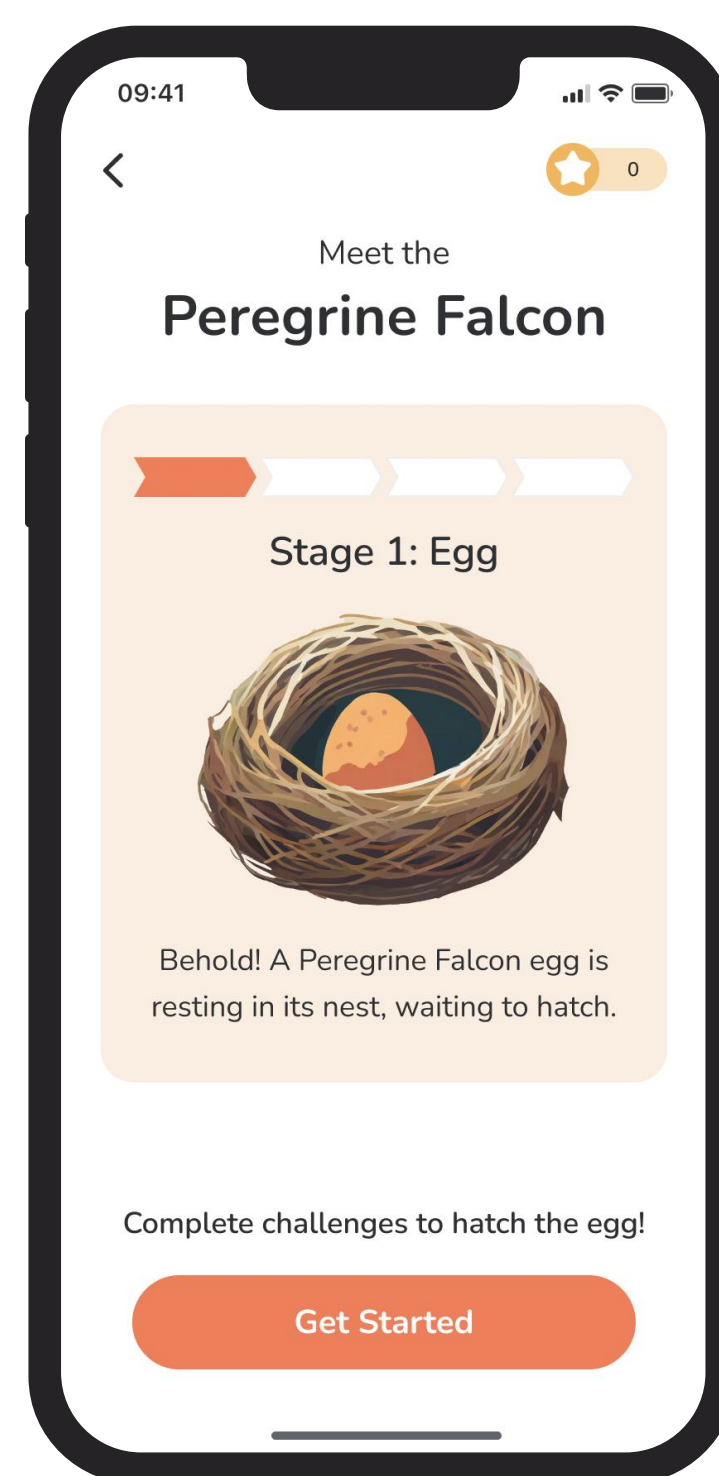
Extending the experience beyond the frame

An immersive application that **provides more context** about users' local habitats and biodiversity as well as **opportunities for interactions** for users.



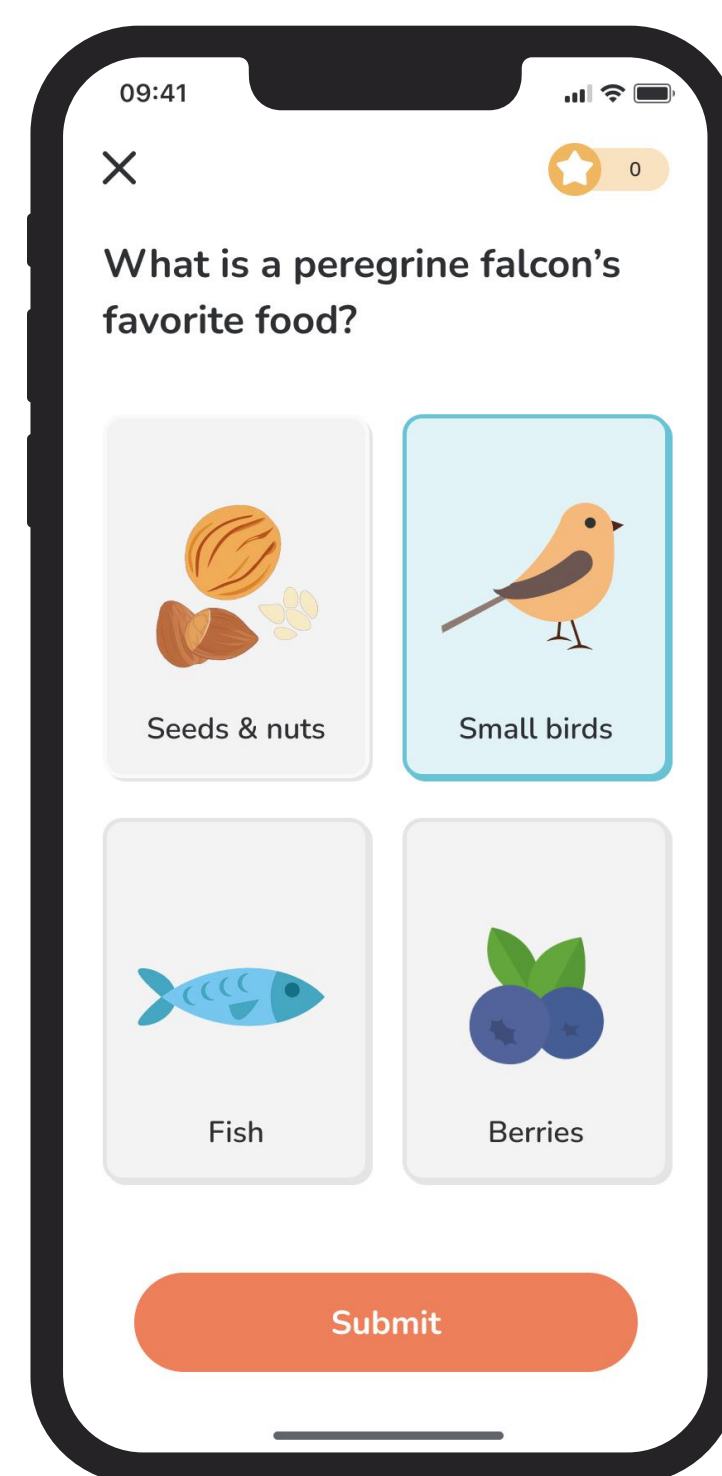
Explore habitats

See and visualize the habitats in your area that you can explore

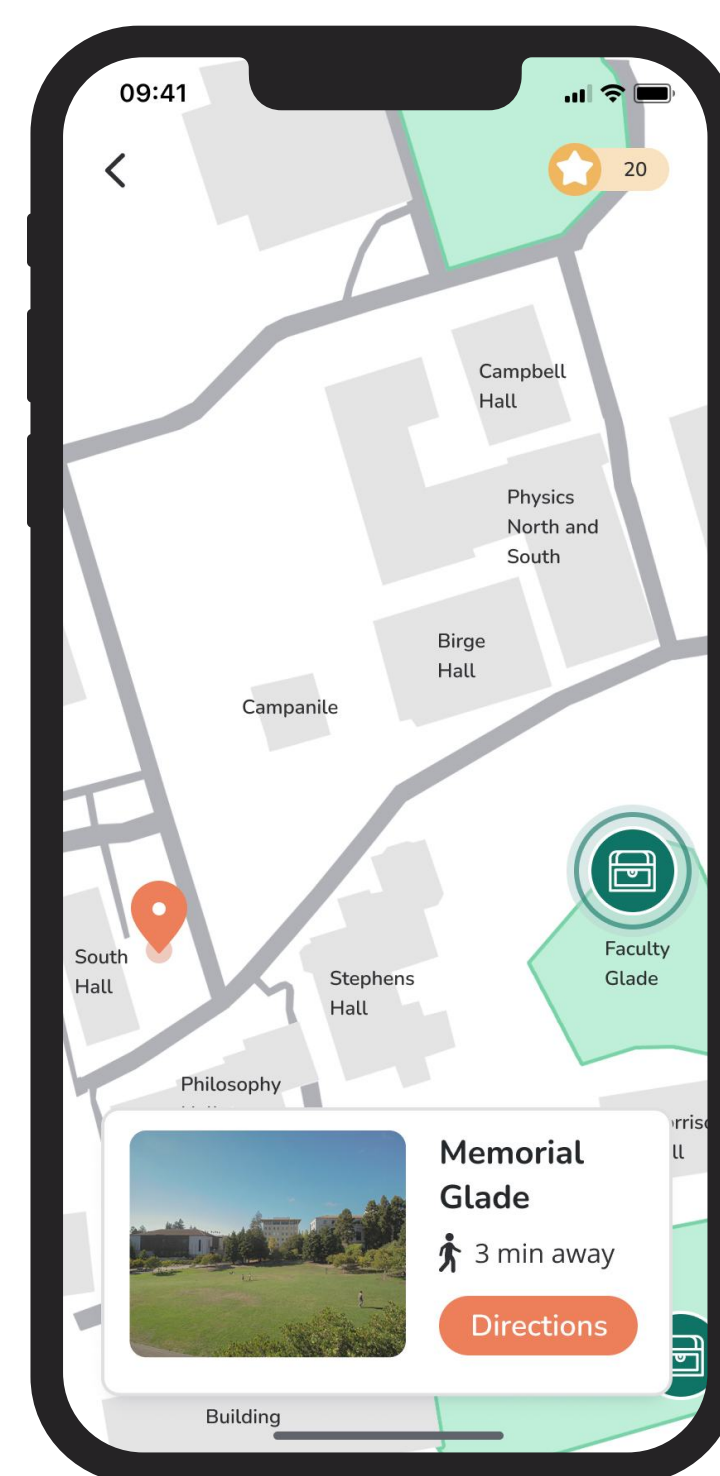


Watch and help your species grow

Dynamically interact with each stage of the life cycle for each species in your habitat

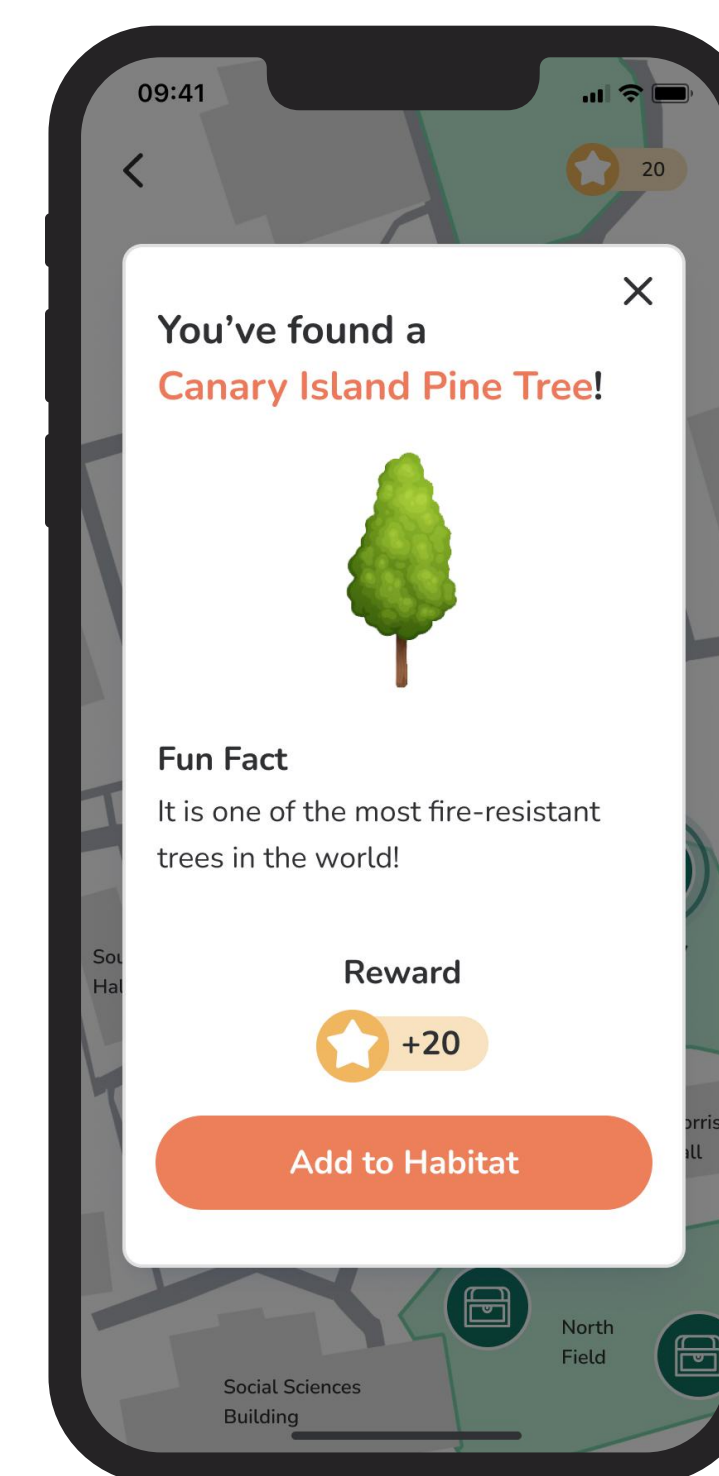


Answer engaging questions to learn important facts about the species

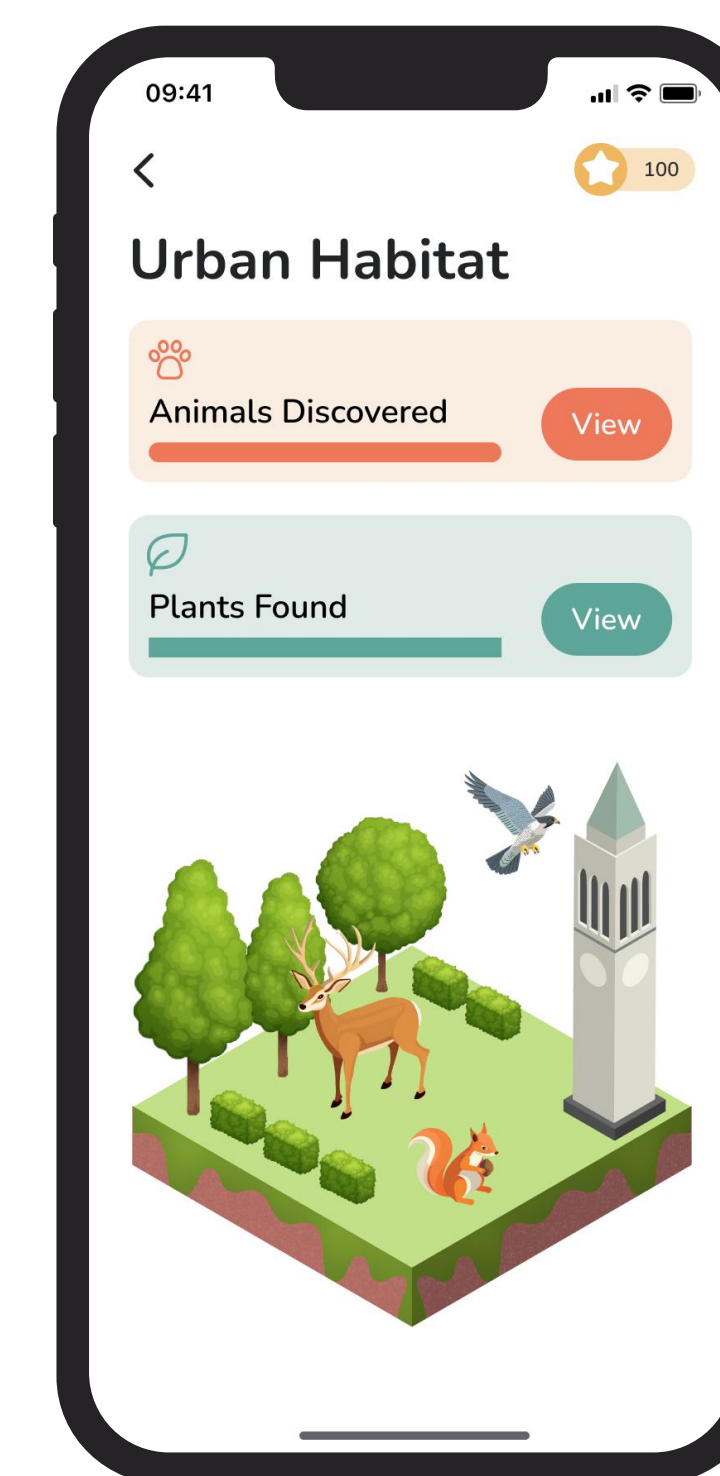


Find treasures in local green spaces

Discover the beauty and richness of your nearby green spaces



Anticipate the treasures at each location - they can range from trees to rare species



Enrich habitats

See your virtual habitats grow more rich with each animal and area you explore