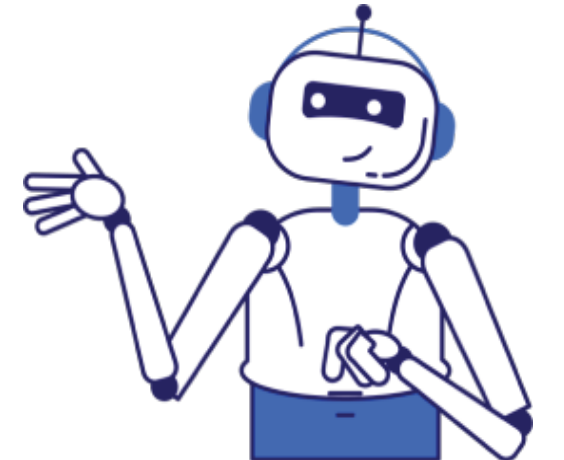




Help! I need to evaluate my ML model for fairness

I can help with that! I am Egaleco, a fairness assessment tool developed at Berkeley. Upload your dataset and let me guide you through each step of the process



HERE'S WHAT I CAN DO..



GUIDED DECISION MAKING

Answer questions to identify the best fairness metrics for your use case



FAIRNESS REPORT

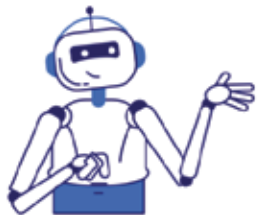
Share the generated fairness report with your team and discuss bias mitigation



POLICY RESOURCES

Broaden your approach with our guides for legal and social fairness

EGALECO IN ACTION..



How would you characterize the availability of resources available to people who need them?

A: Limited Resources
The intervention based on the model's predictions is resource-constrained, and you can only give benefits to some of the people who should get them.

B: Abundant Resources
There are sufficient resources to offer benefits to all people who should get them.

[SHOW EXAMPLE](#)

False Negative Rate Parity (FNR)
Equalized Odds
True Positive Rate Parity (TPR)
False Positive Rate Parity (FPR)
False Omission Rate Parity (FOR)
Accuracy Parity
Demographic Parity
False Discovery Rate Parity (FDR)

